

Modesty Series

Sure A2050 2 x 50 Watt 4 Ohm Class D Audio Amplifier (AA-AS32171)



Key Features:

- Multiple Audio Input Source
- Rotary Encoder Switch Control
- Overcurrent Protection
- Overtemperature Protection
- Low Power Consumption
- Stereo Headphone Amplifier
- Aluminum Anodizing Housing
- Weight: 590g/1.30 lbs. (±10%)
- Size: 6.40 x 2.90 x 1.90 inches

Distributors:



Electrical Specifications

Specifications typical @ +25°C, powered by 19V DC, unless otherwise noted. Specifications subject to change without notice.

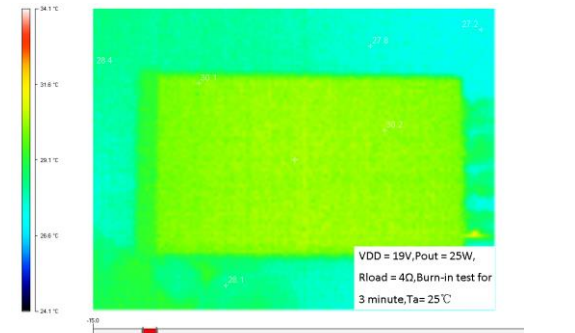
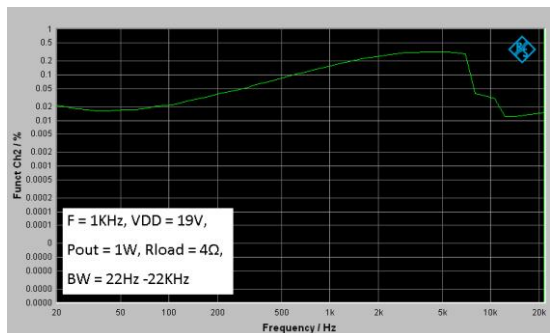
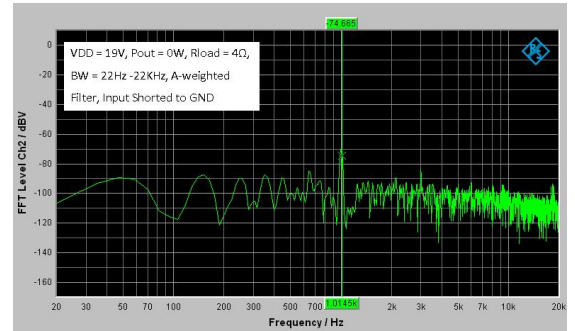
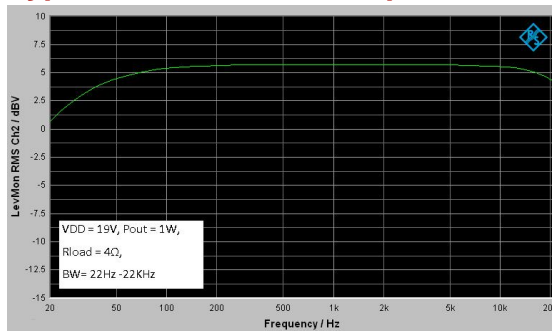
Parameter	Conditions	Min.	Typ.	Max.	Units
Power Supply	-	12	19	20	VDC
Idle Power	SD Floating	-	0.48	2	W
Maximum Current	100W @ 4Ohm	-	6.2	-	A
Efficiency	50W @ 4 Ohm	83	-	88	%
Minimum Load Impedance	-	-	6	-	Ω
Switching Frequency	SD Floating	-	315	-	KHz

Audio Performance

Specifications typical @ +25°C, powered by 19V DC, unless otherwise noted. Specifications subject to change without notice.

Parameter	Conditions	Min.	Typ.	Max.	Units
Gain	Max Volume Level	18	20	22	dB
Input Sensitivity(RMS)	@ 4 Ohm, 50W, 1KHz, 3.5mm	-	1.5	-	V
	@ 4 Ohm, 50W, 1KHz, RCA	-	1.5	-	V
Input Impedance	RCA/3.5mm	-	60	-	KΩ
Output Power	@ 4 Ohm, THD+N 1%	-	40	-	W
	@ 4 Ohm, THD+N 10%	-	50	-	W
Supports Sampling Rate	-	32, 44.1, 48, 88.2 and 96	-	-	KHz
Maximum Sampling Word Length	-	-	24	-	Bit
Bandwidth @ ±3dB	@ 4 Ohm	20	-	20K	Hz
THD	@ 4 Ohm, 1W, 1KHz, 3.5mm	-	0.049	-	%
	@ 4 Ohm, 1W, 1KHz, RCA	-	0.056	-	%
Output Noise Level	A-weighting, Input Connected to GND	-	236	-	uV
SNR	40W @ 4 Ohm, THD+N 1%, RCA Input	-	82	-	dB

Typical Performance Graphs



All these boards are pre-tested with our power supply solution to comply with FCC and CE. For all customers who need those information, please contact our distributor or Sure Electronics. RoHS compliant will need an MOQ of 1000 pieces per order.

Ready for:



Contact info

- Email: info@sure-electronics.com



All parameters were tested with Rohde & Schwarz UPV audio analyzer (AES17 filter enabled) and Audio Precision AUX0025 filter. For authorized distributors and OEM customers who need more detailed performance graphs and parameter settings, please send an inquiry e-mail to us. (Not available for retail customers)

Model Selection Guide

Model Number	Output Power	Power Supply Range	3.5mm	RCA	BT	Toslink/Coaxial
AA-AS32157	2 X 15Watt	DC 9-14V	×	✓	×	×
AA-AS32171	2 X 50Watt	DC 12-20V	✓	✓	×	×
AA-AS32186	2 X 100Watt	DC 12-36V	✓	✓	×	×
AA-AS32971	2 X 100Watt	DC 12-36V	✓	✓	✓	✓

Suggested power supply solution:

HuntKey 19V 3.42A 65W AC/DC Power Adapter (PS-SP11505)

If you have other power supply requirements, please feel free to contact us.

Mechanical Dimensions

FIGURE Front panel

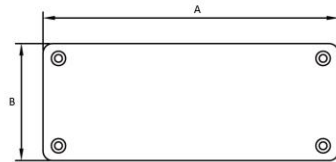


FIGURE Rear panel

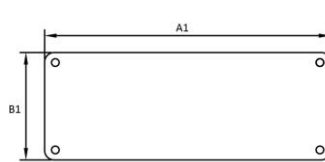
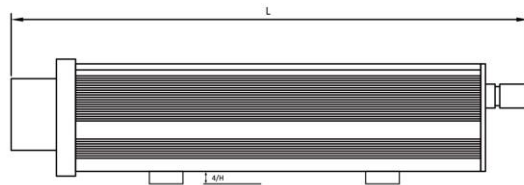


FIGURE Side view

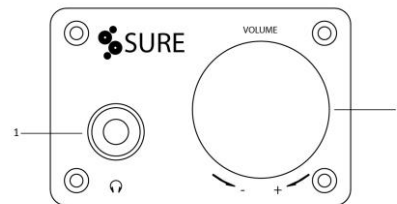
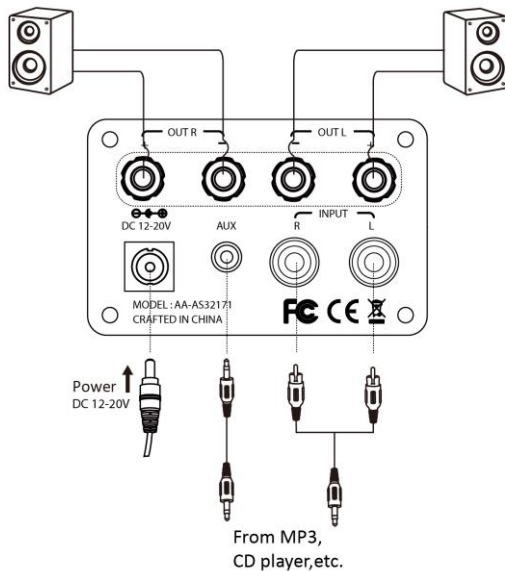


Notes:

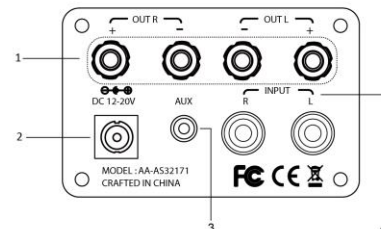
- All dimensions are typical in inches/mm
- Tolerance x.xx = $\pm 0.02(\pm 0.50)$

Dimensions	A (inch/mm)	A1 (inch/mm)	B (inch/mm)	B1 (inch/mm)	L (inch/mm)	H (inch/mm)
#1	2.94/74.60	2.78/70.60	1.93/49.00	1.77/54.00	6.41/162.70	0.16/4.00
#2	4.88/124.00	4.72/120.00	1.93/49.00	1.77/54.00	8.36/212.40	0.16/4.00

Connections



1—Power switch 2—Volume knob



1—Speaker Output 2—Power Input
3—Audio Input Connector 4—Audio Signal Input(RCA)



Sure Electronics

Make Your Audio Application Simple!

NO.9, Weidi Road, Xianlin University City, Qixia District,
Nanjing, Jiangsu Province, P.R.C

www.sure-electronics.com

www.wondom.com

Mail: store@sure-electronics.com

Skype: surewebstore