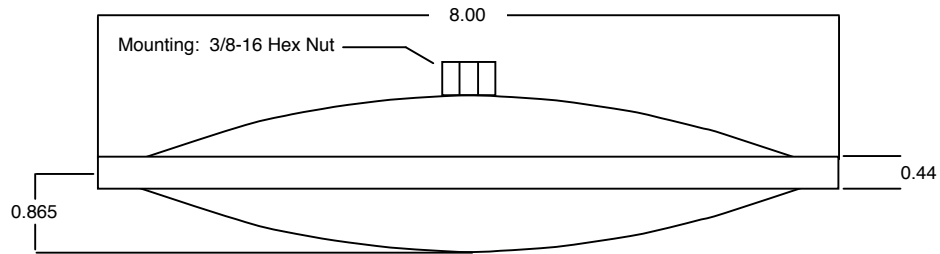


Specifications:

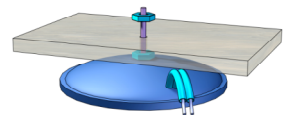


TST429	
Transduction Force	6.9 lb-ft/watt
Tactile Force Peak	932 lb-ft
Peak Power Handling	400 watts
Continuous Power Handling	160 watts
Impedance	4 ohms
Tactile Frequency Range	5Hz to 800Hz
Audible Frequency Range	20Hz to 17kHz
Magnet Assembly	27 oz., 42 MGO Neodymium
Heat Transfer Fluid	Ferrofluidics S32
Overload Protection	Polyswitch
Voice Coil	Kapton® former
Dome Material	ABS/PBT Cevian polyalloy
Electrical Connection	3', Black jacket, 14AWG OFC
Dimensions	8" diam. X 2.25" H

Installation Hardware Included:

A wide range of hardware for any application making installation simple

- | | |
|--|------------------------|
| (1) Universal Mount Bracket | (1) 3/8 Flat Washer |
| (4) 1/4" Flat Washers | (1) 3/8 Lock Washer |
| (4) 1/4" Lock Washers | (1) 3/8-16 Hanger Bolt |
| (4) #14x1 Philips Pan Sheet Metal Screws | (1) 3/8-16 Hex Bolt |
| (1) 3/8-16x3" Stud | (1) 3/8-16 T-Nut |
| (2) 3/8 Jam Nuts | |



TST Color May Vary



Ten Years of Innovation!

Honored with the Innovations Design and Engineering Award for the TST329 in 1998, the Sensation Theater Seat in 2002, and the AQ339 in 2004.

© 2004 Clark Synthesis Tactile Sound. All rights reserved. Clark Synthesis Tactile Sound, Get in Touch With Reality, Tactile Sound, Full Contact Audio, Improving the Way You Hear, Clark Synthesis Tactile Sound logo, and product names referred to herein are the registered trademarks of Clark Synthesis, Inc. All other trademarks are the property of their respective owners.

© 2004 Clark Synthesis Tactile Sound. All rights reserved Tel: 800.898.1945 • info@clarksynthesis.com www.clarksynthesis.com

TST429-Platinum



Features:

- Dome material is high-performance ABS/PBT for long service life
- Full audio bandwidth capabilities to allow for wide variety of audio applications
- Low profile design allows for flexible mounting
- The transducer has full audio bandwidth capabilities to allow for any audio application
- Wide range of hardware included makes installation less complicated

Specifications:

- TST429-Platinum shall provide no less than 6.9 lbs per watt transduction force
- Nominal impedance for the TST429-Platinum is 4 ohms
- power handling of 160 watts continuous—recommended amp 150 - 250 watts

Applications:

- Sound masking – Naval Decryption Centers
- Sound cancellation – Boeing assembly plant 28db reduction from power transformers
- Sound transmission – CNN/Sports Illustrated studio on-glass installation for pedestrians to hear broadcasts
- Car stereo – Better center channel imaging and staging, bass you can feel without the high SPL
- In-car video – With headphones, or without, games and movies come to life
- Assisting the deaf – Brentwood Deaf Auditorium – first deaf church in the world to use Tactile Sound
- Dance floors – Installations to reduce SPL and still create an exciting environment.
- Live sound monitoring – In-ear monitoring augmentation – Dave Mathews band (see full user list)
- Commercial and home theater – Adding realism to suspend disbelief while lowering SPL
- Theme and amusement parks – Theme parks: Disney, Universal Studios, Six Flags, etc.
- Commercial and military simulation – F14, F16, F18a, Bradley Tank, etc.
- Medical/health and wellness – Physiotones pain relief, cognitive learning, etc.
- Trade show booths – Adding excitement and realism – General Motors, Claritin

